

2 cm

CURVE TABLE					
Curve No.	Radius	Arc	Chord	Delta	Chord Bearing
1	22.45	5.62	5.61	142°0'56"	82°49'32"
2	22.45	10.10	10.02	25°46'35"	62°45'46"
3	22.45	10.10	10.02	25°46'35"	36°59'11"
4	14.00	9.00	8.85	36°49'59"	05°40'54"
5	14.00	10.50	10.26	42°58'19"	145°46'45"
6	14.00	17.08	16.04	69°54'11"	89°20'31"
7	14.00	7.40	7.32	30°17'32"	38°14'39"
8	11.35	13.06	12.35	65°54'07"	57°02'57"

LEAVE SPACE FOR RECORD DETAILS
5 X 20 centimetres

SPECIMEN ONLY

PTARMIGAN PLACE
 PLAN OF SURVEY OF
 BARE LAND CONDOMINIUM
 COMPRISING
 LOTS 16 & 17, BLOCK 21, PLAN 71216 (CLSR)
 (LOCATION DESCRIPTION)
 (SEE GUIDELINES FOR PREPARATION OF PLANS)

SCHEDULE			
BARE LAND UNIT NUMBER	AREA (m ²)	UNIT FACTOR	REMARKS
1	690.8	11.30	
2	685.4	11.21	
3	720.0	11.77	
4	624.7	10.21	
5	643.6	10.52	
6	728.1	11.91	
7	614.0	10.04	
8	695.0	11.26	
9	714.0	11.68	
TOTAL	6,115.6	100.00	

SURVEYED BY G.M. DAWSON, CLS IN 1993

SCALE 1:500



LEGEND:

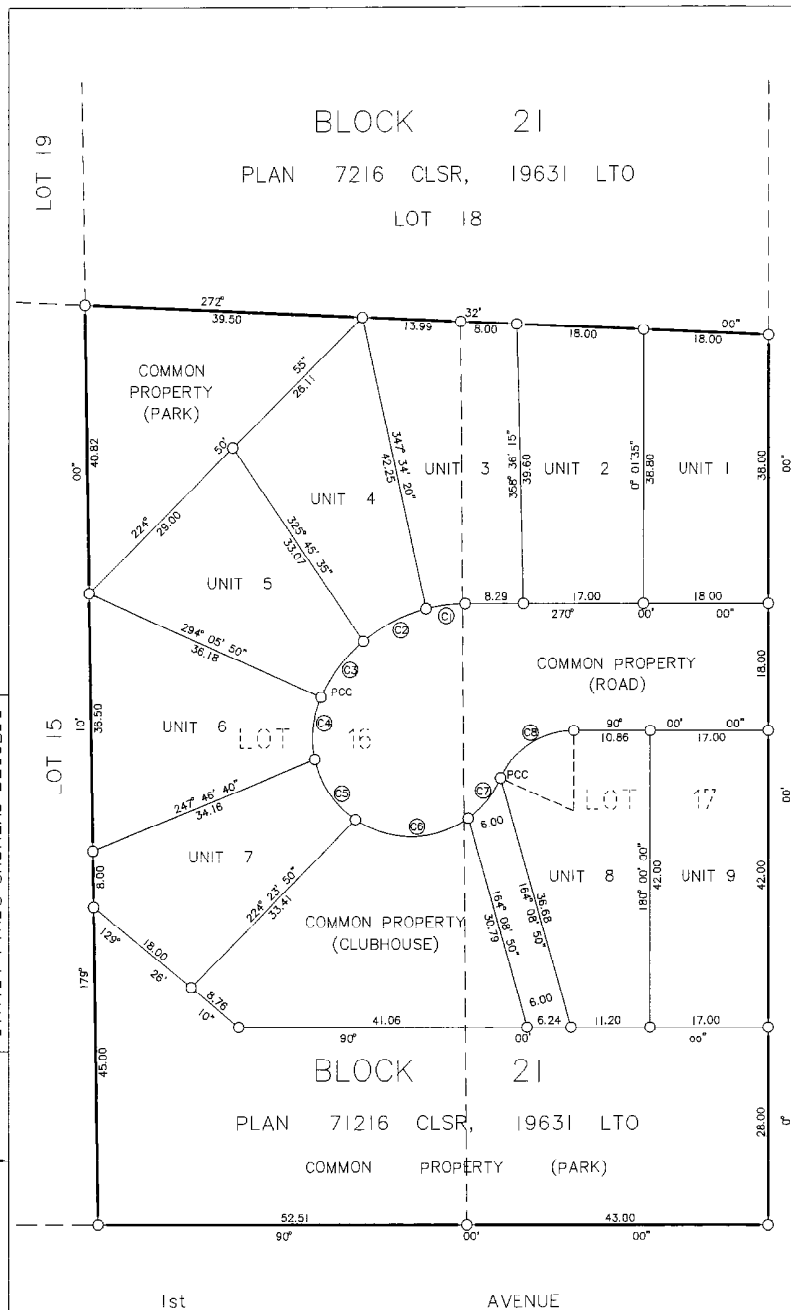
Bearings are Grid, derived from the bearing 179°10'00" of the line between the posts defining the West boundary of Lot 16 as shown on the Plan 71216 CLSR and according to that plan are referred to the Central Meridian of UTM Zone 8 (135° West Longitude).

Area affected by the registration of this plan is shown thus .
 CLS '77 Post shown thus

Distances are in metres.
 All areas not designated with a unit number are common property.
 The boundary of any unit is governed by the survey monuments placed or found pursuant to the Canada Lands Surveys Act.

ADD APPROPRIATE ENDORSEMENT CERTIFICATES

2 cm



STREET

4th

1st

AVENUE

BLOCK 21

PLAN 71216 CLSR, 19631 LTO

LOT 18

LOT 16

LOT 17

BLOCK 21

PLAN 71216 CLSR, 19631 LTO

COMMON PROPERTY (PARK)

COMMON PROPERTY (PARK)

UNIT 5

UNIT 6

UNIT 7

UNIT 8

UNIT 9

COMMON PROPERTY (CLUBHOUSE)

COMMON PROPERTY (ROAD)

UNIT 4

UNIT 3

UNIT 2

UNIT 1

САНІТАРНИЙ ЗАВАНТАЖЕНИЙ АДАПТАЦІЙНИЙ РЕКОРД

CANADA LANDS SURVEYS RECORDS