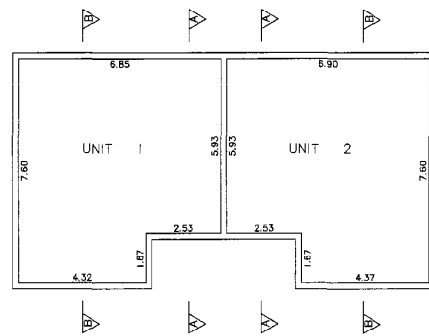
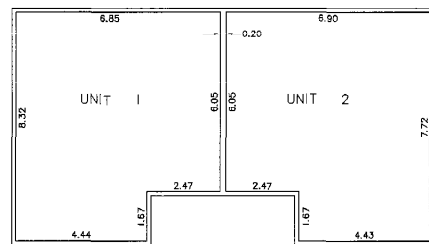


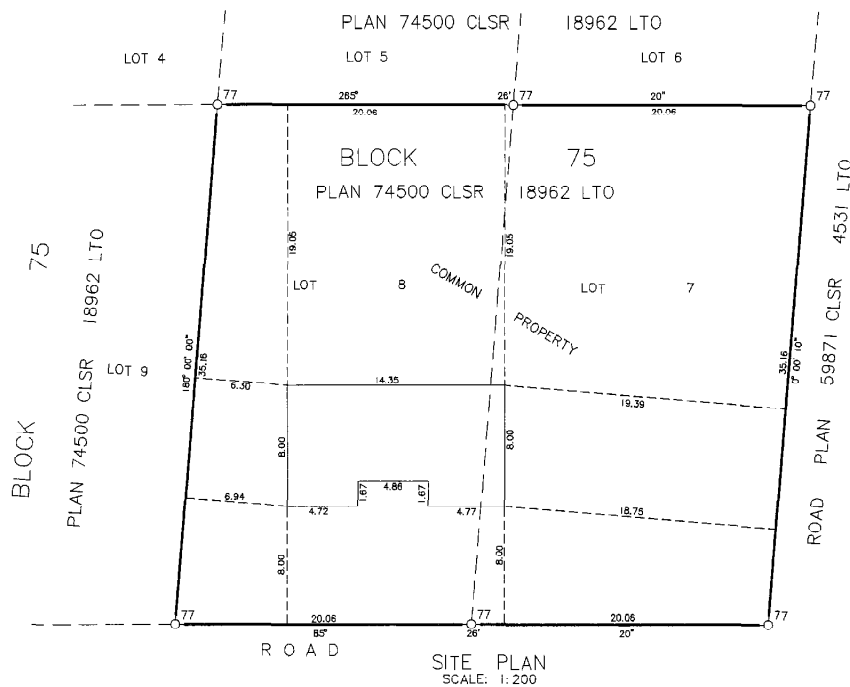
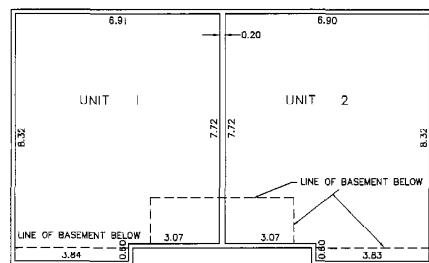
BASEMENT FLOOR LEVEL  
SCALE: 1:100  
ALL WALLS ARE 0.20m IN WIDTH



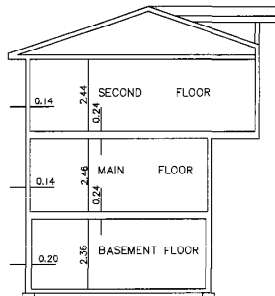
MAIN FLOOR LEVEL  
SCALE: 1:100  
ALL WALLS ARE 0.14m IN WIDTH UNLESS OTHERWISE SHOWN



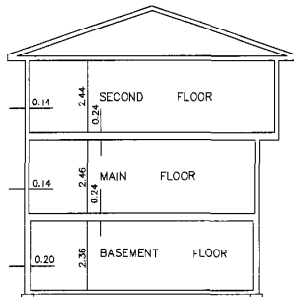
SECOND FLOOR LEVEL  
SCALE: 1:100  
ALL WALLS ARE 0.14m IN WIDTH UNLESS OTHERWISE SHOWN



SITE PLAN  
SCALE: 1:200



SECTION A-A  
SCALE: 1:100



SECTION B-B  
SCALE: 1:100

SCHEDULE			
UNIT NUMBER	AREA (m <sup>2</sup> )	UNIT FACTOR	REMARKS
1	155.0	5034	
2	152.9	4966	
TOTAL	307.9	10000	

LEAVE SPACE FOR RECORD DETAILS  
5 X 20 centimetres

**SPECIMEN ONLY**

PLAN OF SURVEY OF  
CONDOMINIUM  
COMPRISING  
LOTS 7 & 8, BLOCK 75, PLAN 74500 CLSR

(LOCATION DESCRIPTION)  
(SEE GUIDELINES FOR PREPARATION OF PLANS)

SURVEYED BY H.J. CAMBIE, CLS IN 1993

SCALE 1:100



LEGEND:

Bearings are Grid, derived from the bearing 0°00'00" of the line between the posts defining the West boundary of Lot 8 as shown on the Plan 74500 CLSR and according to that plan are referred to the Central Meridian of UTM zone 8 (135° West Longitude).

Lands dealt with by this plan bounded thus  
CLS '77 Post shown thus

Distances are in metres.  
Internal unit dimensions refer to unit boundaries and are an indication of unit size as determined by field measurements.  
External building dimensions refer to ground level exterior concrete foundation walls. Ties to building corners are perpendicular to the lot line.  
All areas not designated with a unit number are common property.  
All finished material such as lath, plaster, gypsum board, panels, flooring material, or any other material that is attached, laid, glued or applied to the face of the support or structural material, including doors and windows, are part of the unit.  
The boundary of a unit with another unit or with the common property is that portion of the floor, wall or ceiling as the case may be, which is considered to be the face of the support or structural material.  
Unit areas include the total of all floor levels.

ADD APPROPRIATE ENDORSEMENT CERTIFICATES