

MAPS AND SPECIMEN PLANS
TO ACCOMPANY THE
MANUAL
OF INSTRUCTIONS FOR THE
SURVEY OF DOMINION LANDS

DEPARTMENT OF THE INTERIOR
OTTAWA

9 M-1

Rec. No. 22359

MAPS AND SPECIMEN PLANS

*To accompany Manual of Instructions for the
Survey of Dominion Lands*

Compiled Township Plan.

Plan of Survey of Settlement.

Plan of Survey of Townsite.

Plot of Stadia Traverse.

Map of First, Second, and Fifth Systems of Survey.

9-M 1

SPECIMEN PLAN OF SURVEY OF TOWNSITE

NOTE: This survey was made previous to the adoption of the standard post.

WHOLLY WITHIN DUCK MOUNTAIN FOREST RESERVE

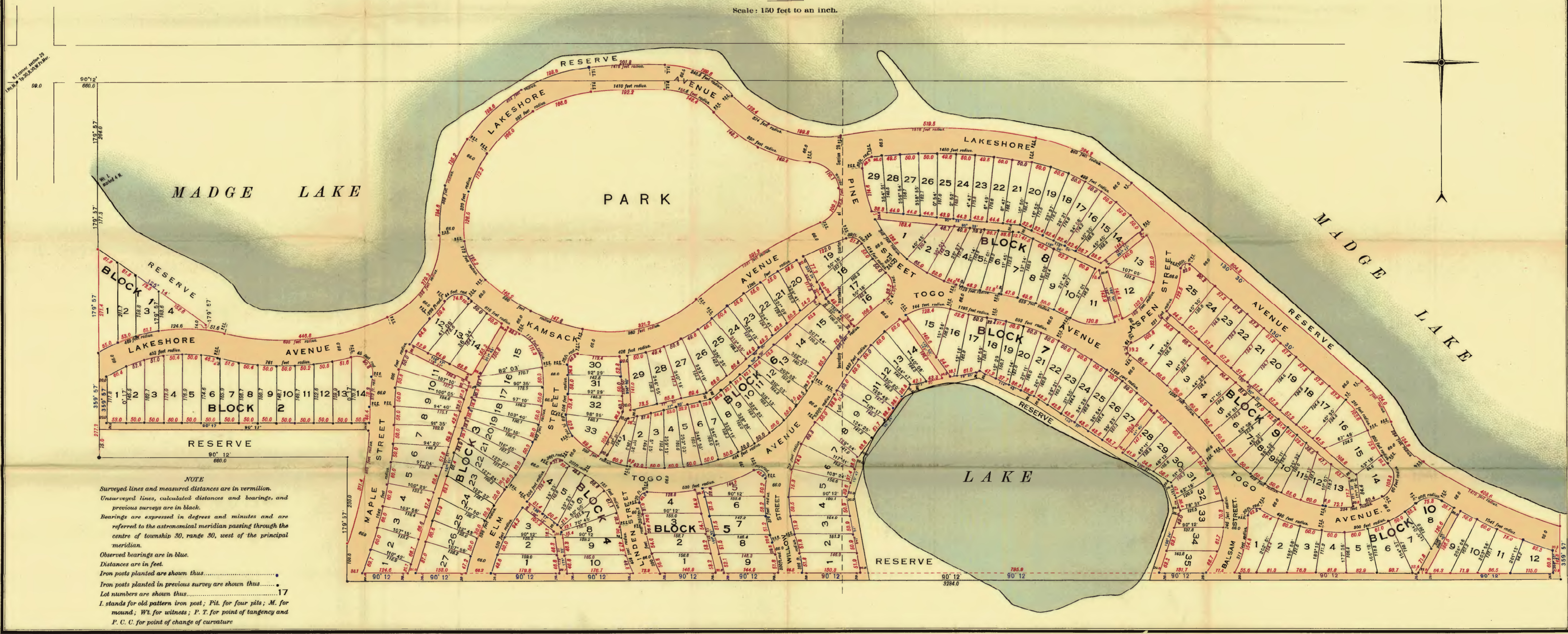
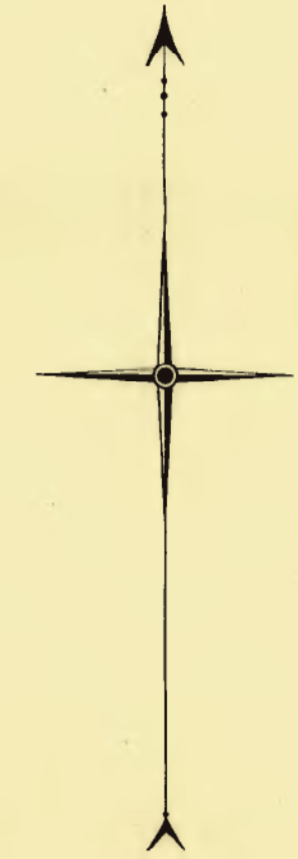
PLAN OF SUBDIVISION
AT
MADGE LAKE

Being part of the north half of Section 28, Township 30,
Range 30, West of Principal Meridian

PROVINCE OF SASKATCHEWAN

Surveyed by W. J. Deans, D.L.S., August, 1914.

Scale: 150 feet to an inch.



NOTE
Surveyed lines and measured distances are in vermilion.
Unsurveyed lines, calculated distances and bearings, and previous surveys are in black.
Bearings are expressed in degrees and minutes and are referred to the astronomical meridian passing through the centre of township 30, range 30, west of the principal meridian.
Observed bearings are in blue.
Distances are in feet.
Iron posts planted are shown thus
Iron posts planted in previous survey are shown thus
Lot numbers are shown thus
I. stands for old pattern iron post; P. for four pits; M. for mound; Wt. for witness; P. T. for point of tangency and P. C. C. for point of change of curvature

SPECIMEN PLAN OF SURVEY OF SETTLEMENT.

NOTE: This survey was made previous to the adoption of the standard post.

PROVINCE OF ALBERTA

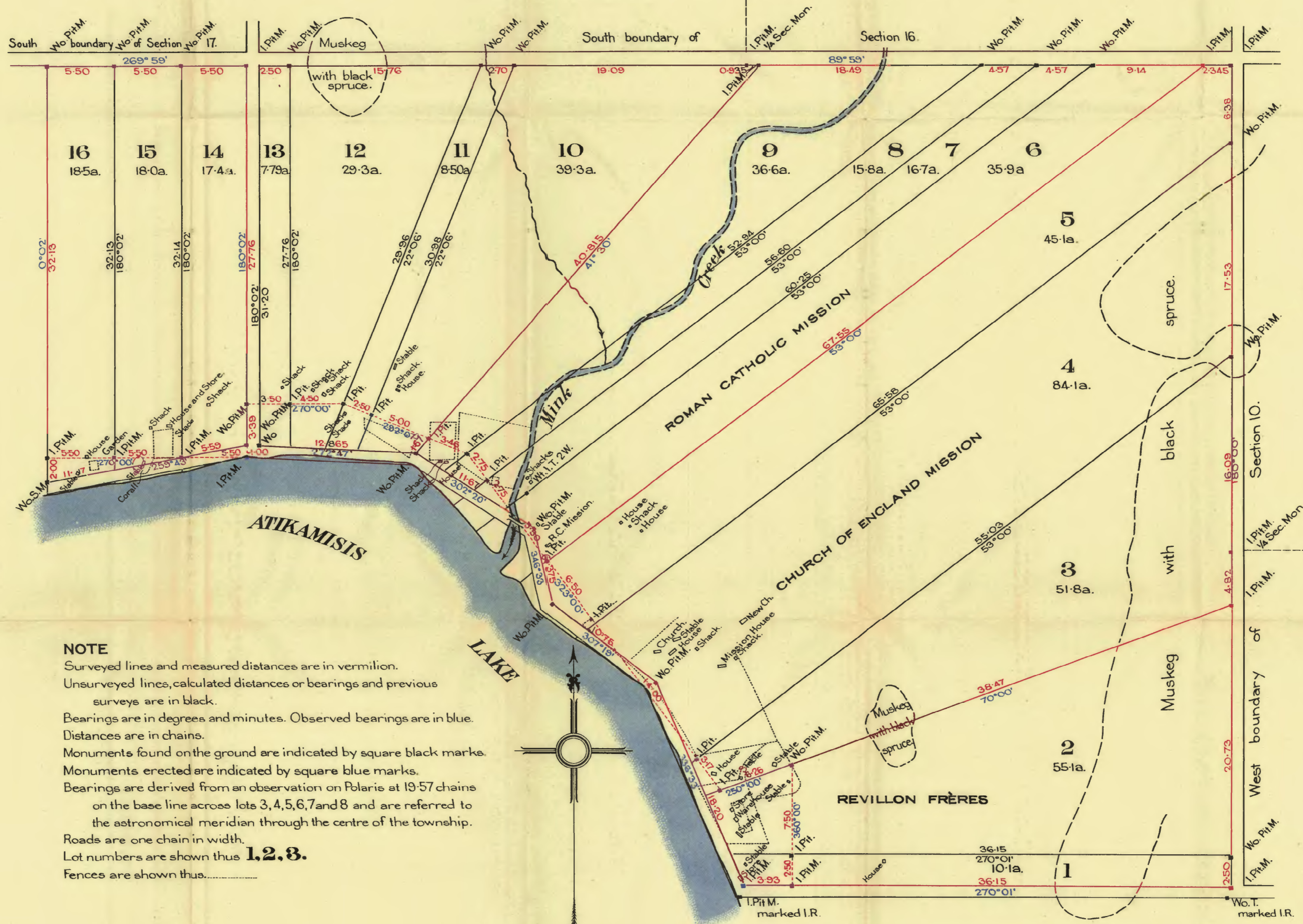
PLAN OF

ATIKAMISIS LAKE SETTLEMENT

IN SECTIONS 8 AND 9, TOWNSHIP 80, RANGE II, WEST OF THE FIFTH MERIDIAN

Surveyed by P.R.A. Belanger, D.L.S., 25th. July 1914.

SCALE 6 CHAINS TO AN INCH



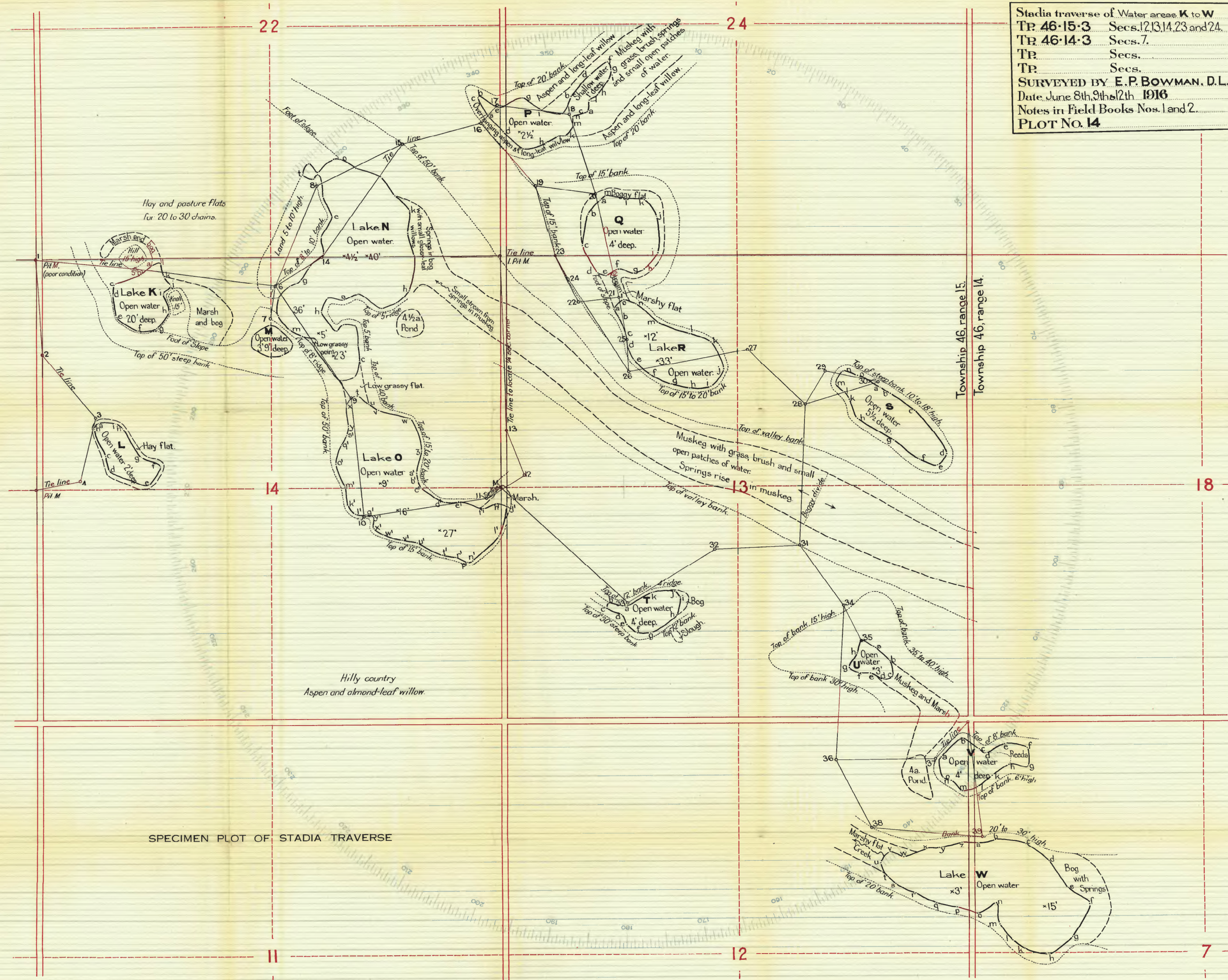
NOTE

Surveyed lines and measured distances are in vermilion.
 Unsurveyed lines, calculated distances or bearings and previous surveys are in black.
 Bearings are in degrees and minutes. Observed bearings are in blue.
 Distances are in chains.
 Monuments found on the ground are indicated by square black marks.
 Monuments erected are indicated by square blue marks.
 Bearings are derived from an observation on Polaris at 19.57 chains on the base line across lots 3, 4, 5, 6, 7 and 8 and are referred to the astronomical meridian through the centre of the township.
 Roads are one chain in width.
 Lot numbers are shown thus **1.2.3.**
 Fences are shown thus.....

(Affidavit not printed.)

INDIAN RESERVE No 155

Stadia traverse of Water areas **K** to **W**
 TP. 46-15-3 Secs. 12, 13, 14, 23 and 24.
 TR. 46-14-3 Secs. 7.
 TR. Secs.
 TR. Secs.
 SURVEYED BY **E. P. BOWMAN, D.L.S.**
 Date June 8th, 9th & 12th 1916
 Notes in Field Books Nos. 1 and 2.
PLOT NO. 14



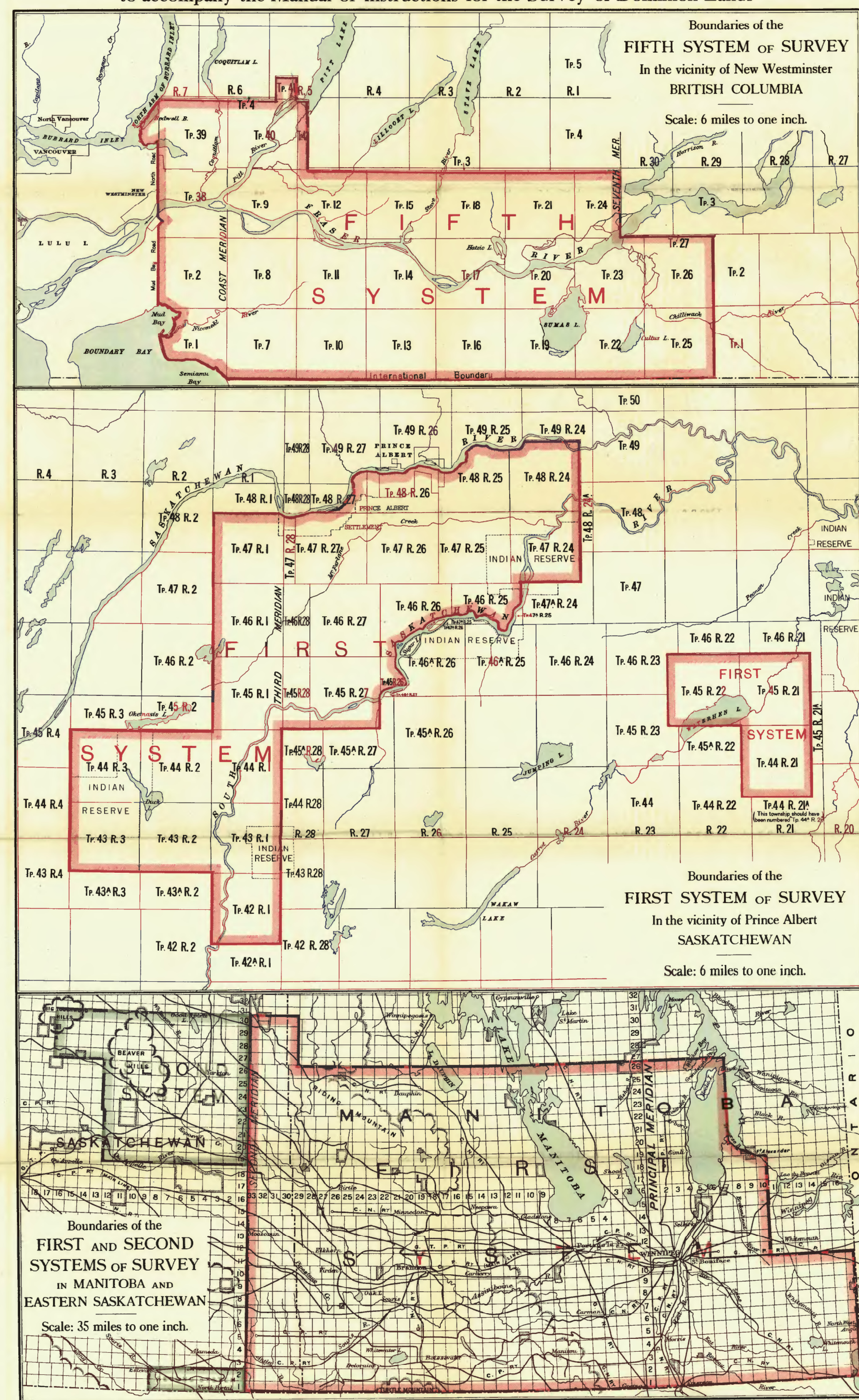
SPECIMEN PLOT OF STADIA TRAVERSE

Township 46, range 15.
 Township 46, range 14.

18

7

MAP OF THE FIRST, SECOND AND FIFTH SYSTEMS OF SURVEY
to accompany the Manual of Instructions for the Survey of Dominion Lands



ALBERTA

Plan of Township 90, Range 9, West of the Meridian

FIRST EDITION

SCALE 40 CHAINS TO AN INCH

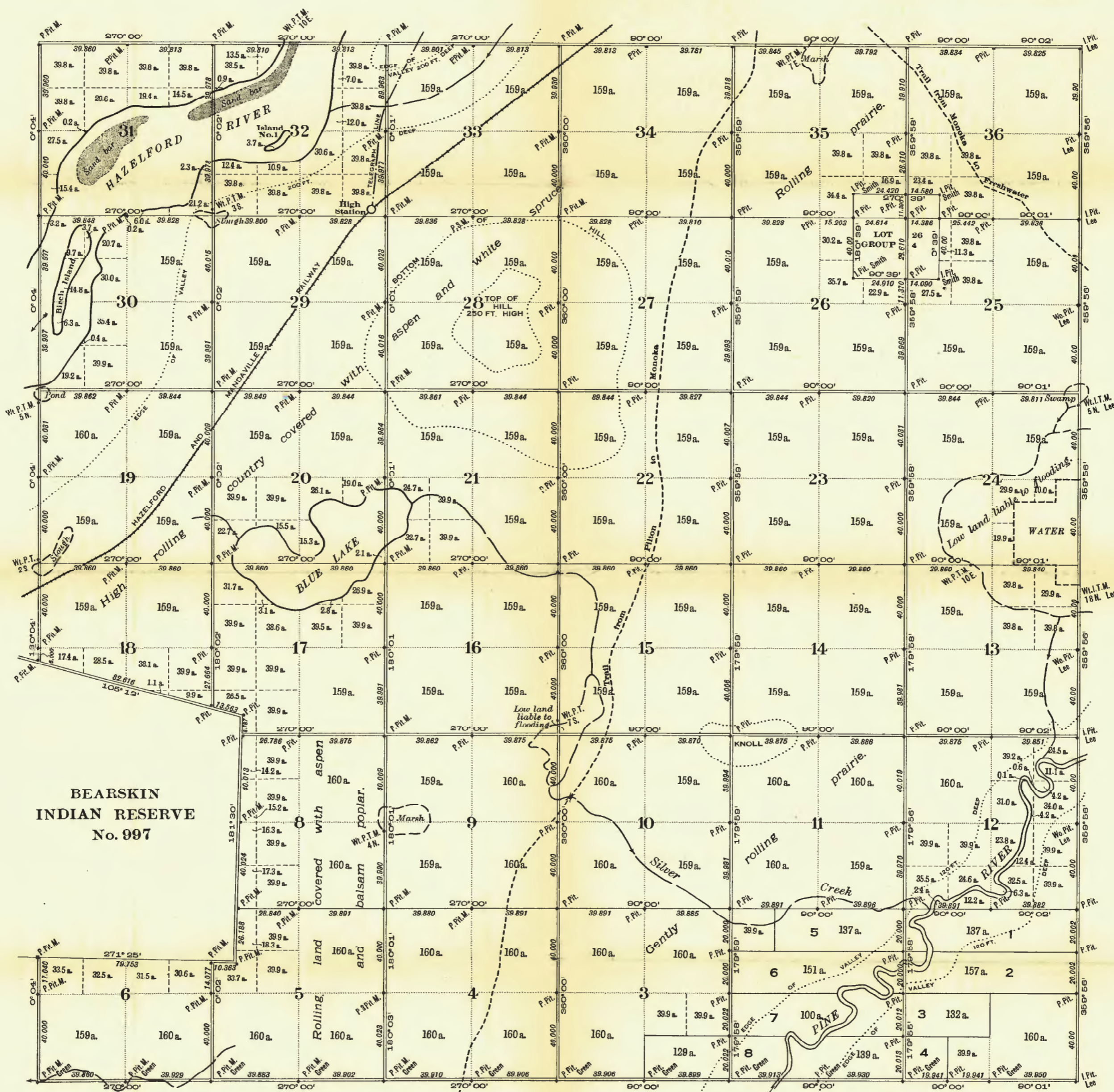


PHOTO-LITHOGRAPHED AT THE SURVEYOR GENERAL'S OFFICE, OTTAWA, CANADA

Compiled from official surveys by

- C. Smith,.....D.L.S.....18th July,.....1893
- G. Lee,.....D.T.S.....9th December,.....1896
- J. Green,.....D.L.S.....19th May,.....1917
- J. Brown,.....D.L.S.....21st October,.....1917

NOTE: The subdivisions of quarter-sections shown upon this plan are legal subdivisions and quarters of legal subdivisions. Distances are in chains. Bearings are reckoned from the astronomical meridian through the centre of the township. Areas in acres are marked on all lands surveyed. Areas are taken to the banks of Hazel Ford and Pine rivers. Lot numbers are shown thus...5 The name at a monument is that of the surveyor who erected the monument. All monuments not so designated were erected or restored by J. Brown. P. stands for standard post; I. for old pattern iron post; Wo. for wooden post; Pit. for four pits; M. for mound; S. M. for stone mound; Wt. for witness; T. for trench.

Department of the Interior, Ottawa, 26th November, 1917

Approved and Confirmed

E. Deville
Surveyor General.

13	14	15	16
12	11	10	9
5	6	7	6
4	3	2	1

Legal Subdivisions
in a Section