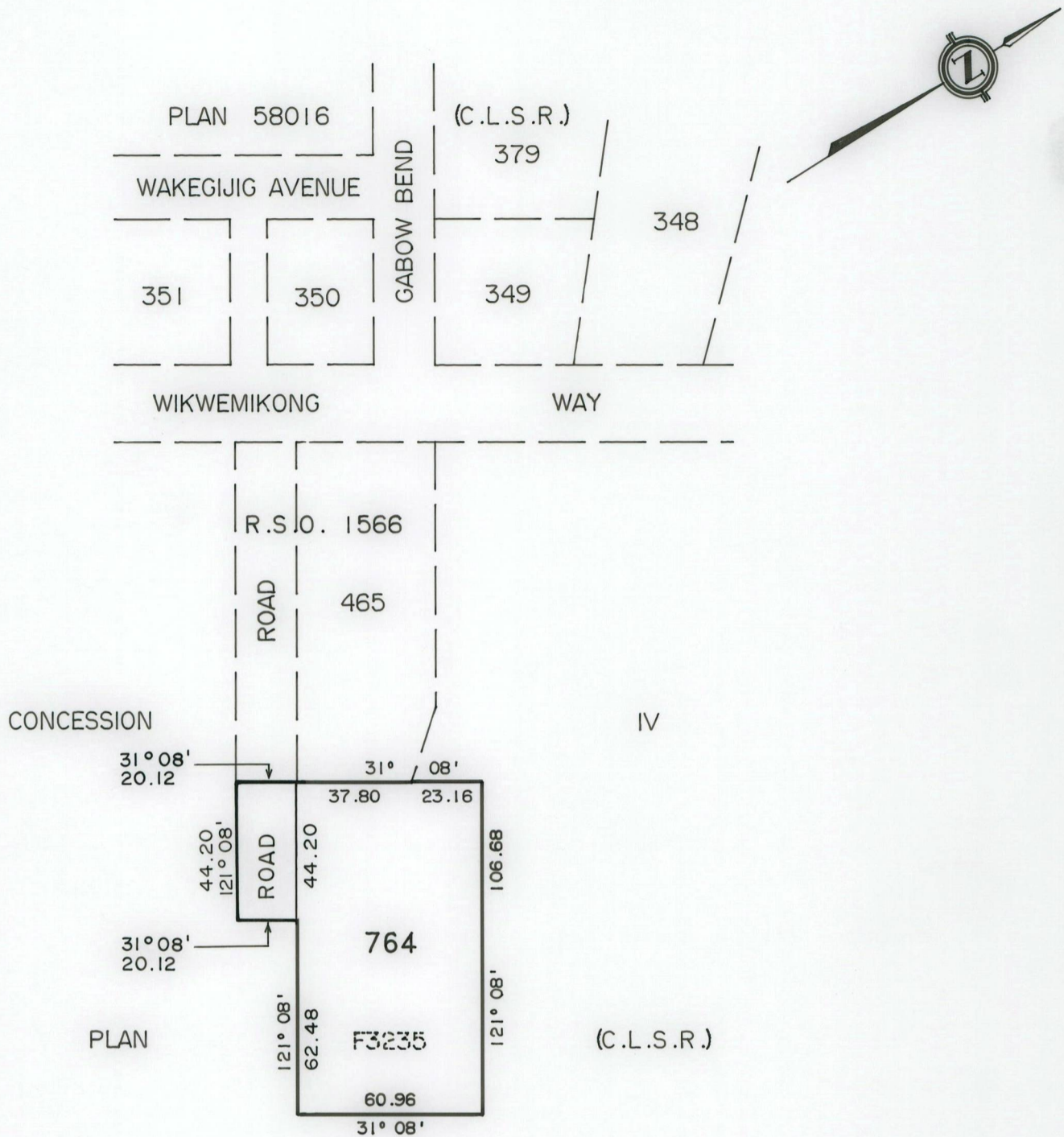


METRIC

DISTANCES SHOWN ON THIS PLAN ARE IN METRES  
AND MAY BE CONVERTED TO FEET BY DIVIDING BY 0.3048

R.S.O. 3035

FILE W-10



PLAN OF  
LOT 764 AND ROAD (in the vicinity of LOT 12, CONCESSION IV)  
WIKWEMIKONG UNCEDED INDIAN RESERVE NO. 26  
TOWNSHIP OF WIKWEMIKONG, DISTRICT OF MANITOULIN  
PROVINCE OF ONTARIO

Based on Plan R.S.O. 1566, sketch and Band Council  
Resolution No. 2044 dated October 14, 1988.

SCALE 1:2000  
50 20 0 50 100 Metres

AREA TABLE

Lot	Hectares	Acres	Lot	Hectares	Acres
764	0.650	1.61			
ROAD	0.089	0.22			

I hereby certify that the boundaries shown hereon are  
correct in accordance with existing survey plans and  
information contained in Band Council Resolution No.  
2044 dated October 14, 1988.

COMPILED BY: CADAR Corp. EXAMINED BY: MTS/MWB  
DRAWN BY: CADAR Corp. REVIEWED BY: PDO

*J. Khuman* C.L.S. 89-08-03  
Regional Surveyor Ontario (Date)

JPA

(c)