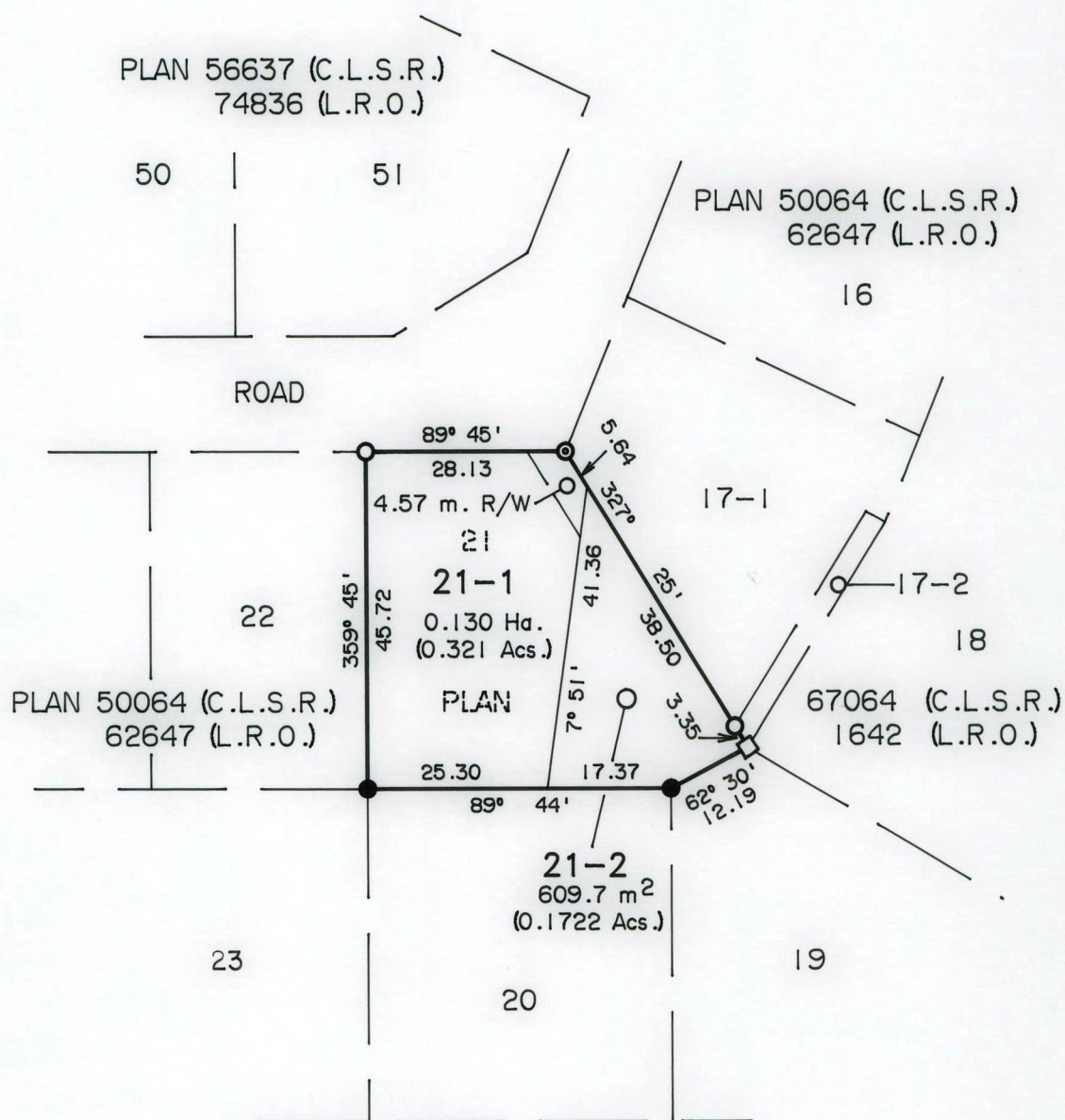


R.S.O. 2432

FILE

A-5

**METRIC**

DISTANCES SHOWN ON THIS PLAN ARE IN METRES  
AND MAY BE CONVERTED TO FEET BY DIVIDING BY 0.3048

PLAN OF  
LOTS 21-1 AND 21-2 IN VILLAGE LOT 141 74836 OCT 29  
AKWESASNE INDIAN RESERVE NO. 15  
TOWNSHIP OF DUNDEE, COUNTY OF HUNTINGDON  
PROVINCE OF QUEBEC

Based on Plan 67064 (C.L.S.R.), Sketches and Transfer  
of Land document dated May 12, 1987 and Right-of-Way  
Agreement dated May 12, 1987.

SCALE 1:1000 25 10 0 25 50 Metres

**LEGEND**

Standard Iron Bar (25mm sq.x1.2m long) . . . . . □  
Old Pattern Iron Post . . . . . ●  
C.L.S. Standard Post . . . . . ⊙  
Round Iron Bar (16mm dia.x0.76m long) . . . . . ○

I hereby certify that the boundaries shown hereon are  
correct in accordance with existing survey plans and  
information contained in Transfer of Land document  
dated May 12, 1987 and Right-of-Way Agreement  
dated May 12, 1987.

*D.S.M. Master*  
C.L.S.

Regional Surveyor Ontario

*Sept 3/87*  
(Date)

COMPILED BY: CADAR Corp.

EXAMINED BY: JHG

AMENDED:

DRAWN BY: CADAR Corp.

REVIEWED BY: *74836*