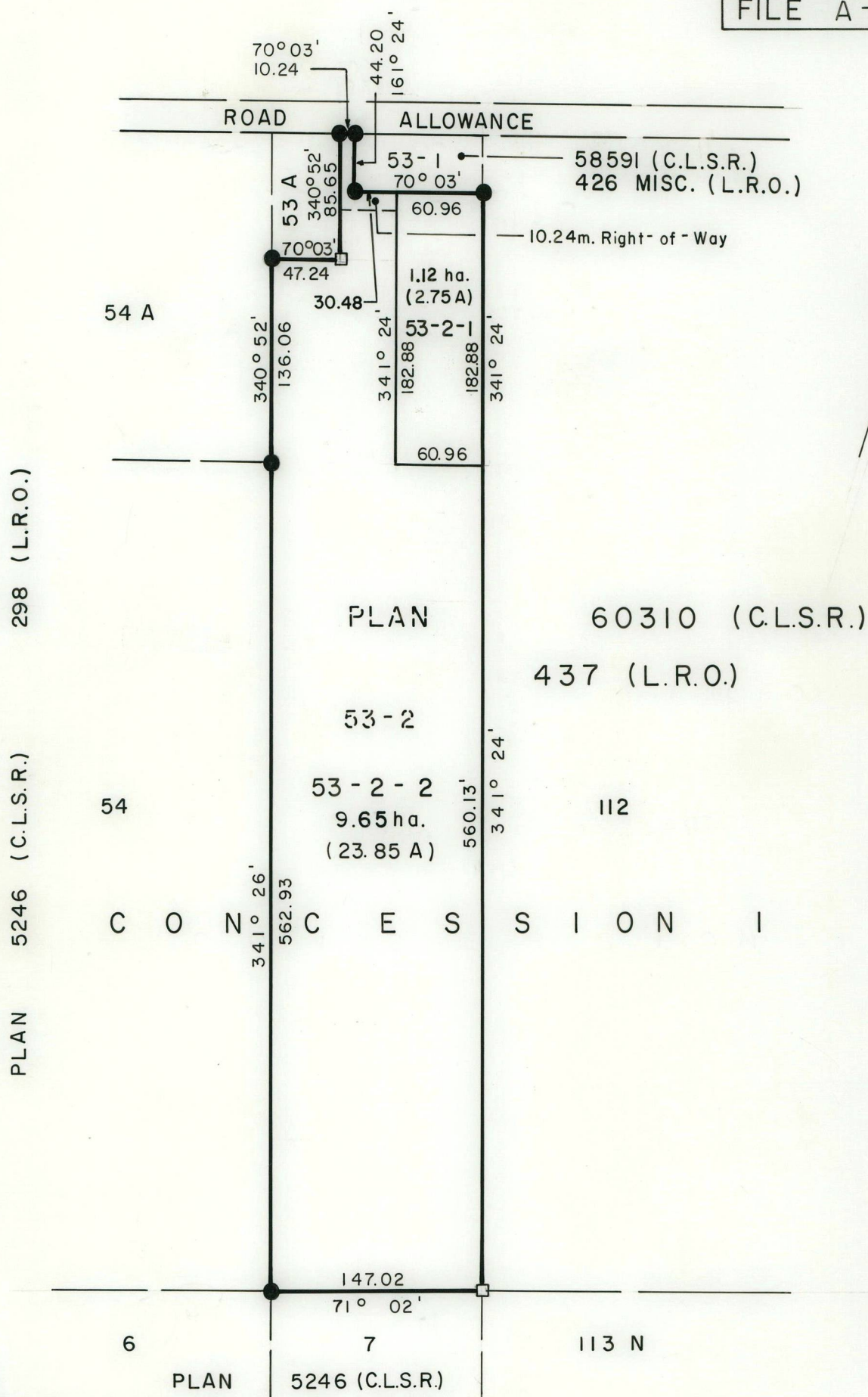


R.S.O. 678

FILE A-3

**METRIC:**

DISTANCES SHOWN ON THIS PLAN ARE IN METRES
AND MAYBE CONVERTED TO FEET BY DIVIDING BY 0.3048

PLAN OF
LOTS 53-2-1 & 53-2-2, CONCESSION 1
ALDERVILLE INDIAN RESERVE No 37
TOWNSHIP OF ALNWICK, COUNTY OF NORTHUMBERLAND
PROVINCE OF ONTARIO

Based on Plan 60310 (C.L.S.R.) sketch and transfer
document dated September 26, 1979 and R/W agreement
dated September 1, 1981.

SCALE 1:4000

100 50 0 100 200m.

LEGEND

OLD PATTERN IRON POST ●
STANDARD IRON BAR □

I hereby certify that the boundaries shown hereon are
correct in accordance with existing survey plans and
information contained in transfer document dated
September 26, 1979 and R/W agreement dated
September 1, 1981.

D. Arnold
C.L.S.

2/64/82
(Date)

[Signature] Regional Surveyor Ontario

COMPILED BY: H.P.C.

EXAMINED BY:

AMENDED:

DRAWN BY: H.P.C.

REVIEWED BY: H.P.C.