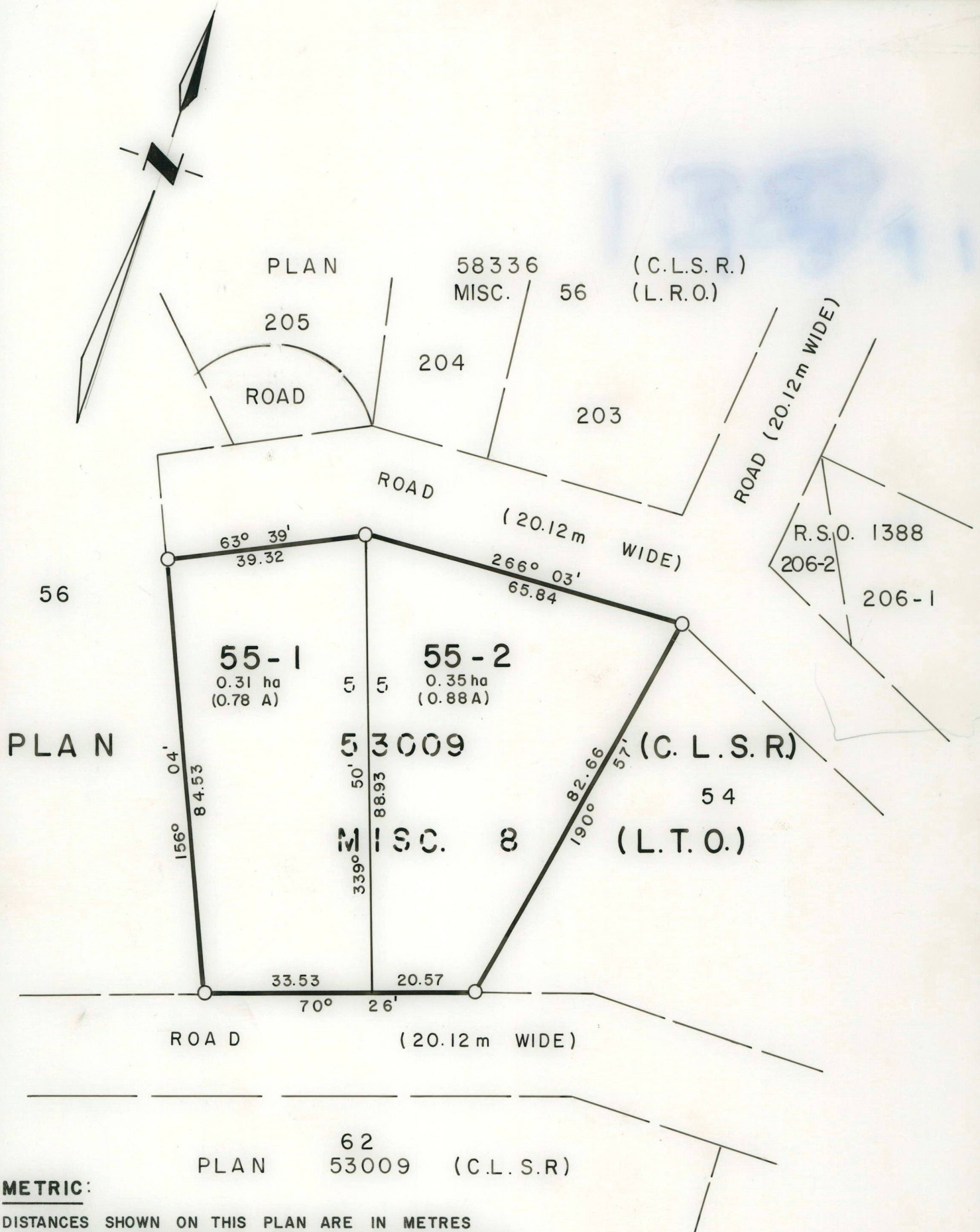


R.S.O. 1390

FILE W-9



PLAN OF
LOTS 55-1 AND 55-2
WHITEFISH RIVER INDIAN RESERVE No 4
DISTRICT OF MANITOULIN
PROVINCE OF ONTARIO

Based on Plan 53009 (C.L.S.R.) Plan 58336 (C.L.S.R.)
sketch and Transfer of Land document dated April 18, 1984.

SCALE 1:1000

20m 10 0 20 40 60m

LEGEND

Old Pattern Iron Post ○

I hereby certify that the boundaries shown hereon are
correct in accordance with existing survey plans and
information contained in Transfer of Land document
dated April 18, 1984.

D. Smith
C.L.S.
Regional Surveyor Ontario

30/08/84
(Date)

COMPILED BY: MASH

EXAMINED BY: W.D.B.

AMENDED:

DRAWN BY: MASH

REVIEWED BY: J.E.F