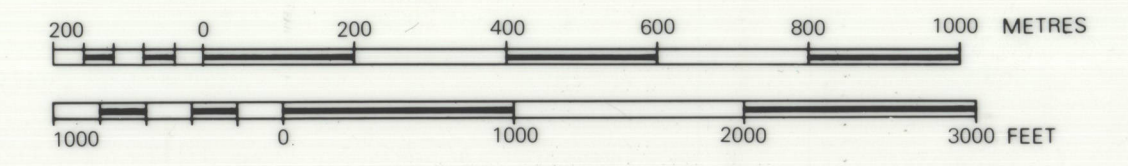


CANADA LANDS SURVEYS RECORDS
6 4 1 5 0
DATE 20 MAR 1978

PHOTOMAP OF
PART OF SECTIONS 15 AND 16
TOWNSHIP 21 RANGE 17 W.2 MER.
MUSCOWPETUNG I.R. N^o80
PROVINCE OF SASKATCHEWAN

SHEET N^o 2

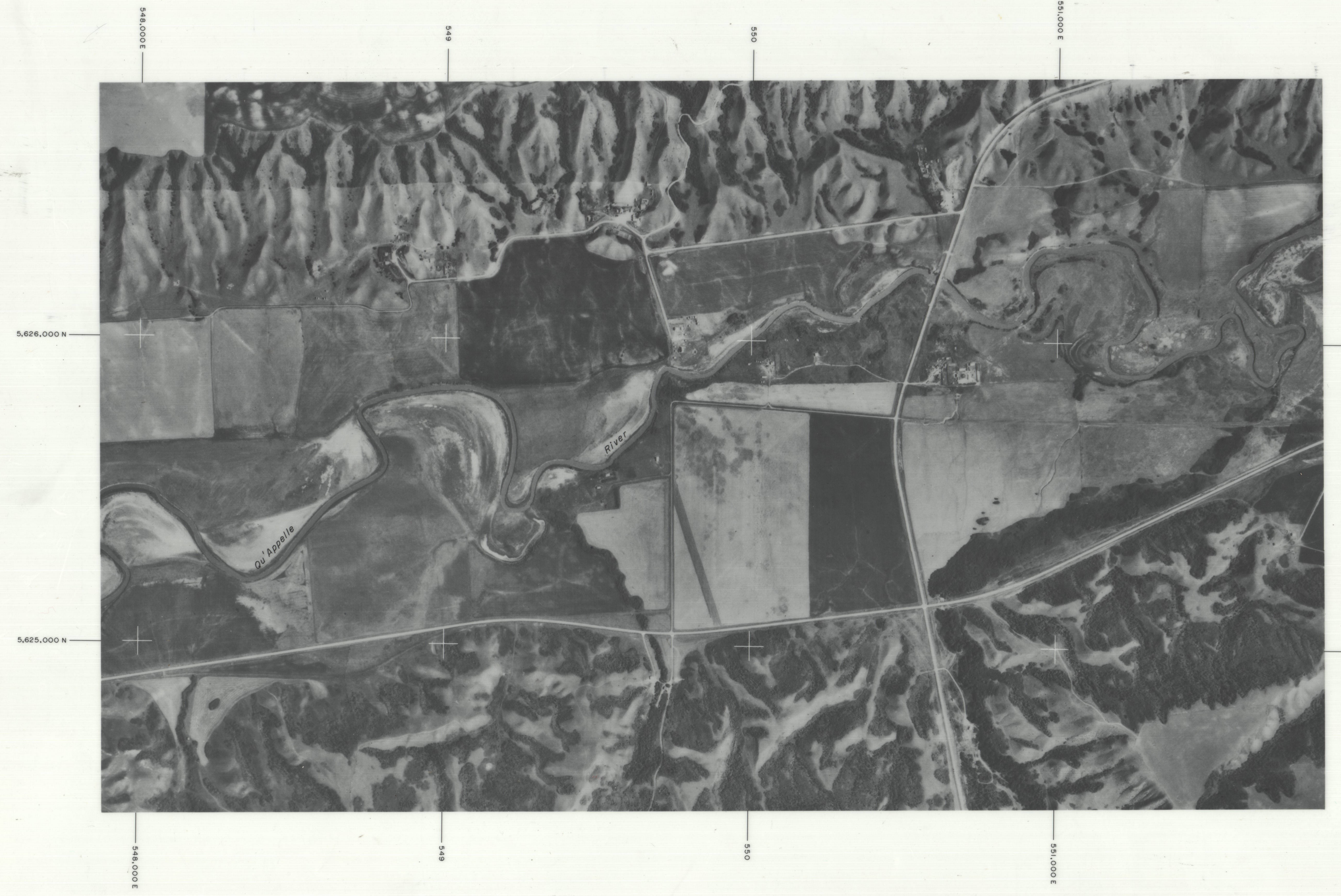
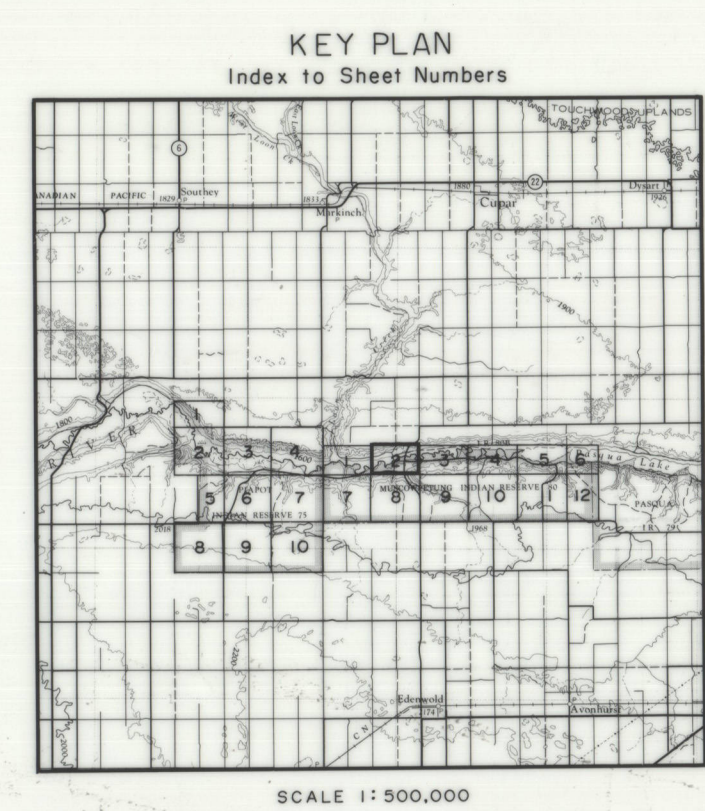
SCALE 1:10000



N.T.S. MAP SHEET REFERENCES: 721/16

- LEGEND**
- Surveyed boundaries
 - Quarter section lines 14
 - Unsurveyed boundaries
 - Unsurveyed boundaries with fence lines x-x
 - Legal survey monument O
 - Land use areas and acreages shown thus
 - Grid intersections at 1000 metres shown thus

Land Use Areas are numbered consecutively from one (1) upwards for each section and includes the Land Use Areas within the statutory road allowances on the south and west sides of the section.
All surveyed boundaries are defined by official plans of survey.
All unsurveyed boundaries are subject to precise determination by future survey.
This plan may be used to describe land for a lease or permit of duration of not more than ten (10) years.
Photomap compiled from 1977 vertical aerial photographs Roll No A24714
The co-ordinate grid shown is the Universal Transverse Mercator Grid system (6°) with the origin at meridian of longitude 115° and the equator, U.T.M. Zone 13.



| TABLE OF REVISIONS:- Before making any revision to this plan ensure that a copy showing the area affected prior to the revision is filed in the Regional Surveyor Saskatchewan Records. | | | | | |
|---|---------------|---------|------------------------------|---------|------|
| Section | Land Use Area | Remarks | Copy of plan before revision | Initial | Date |
| | | | | | |

| | |
|--|---|
| Photomap compiled by Kenting Earth Sciences Ltd. | Filed in the office of the Regional Surveyor, Department of Energy, Mines & Resources as Plan |
| Boundaries drafted by | Regional Surveyor, Saskatchewan on 19 |
| Areas calculated by | Regional Surveyor |
| Drafted by | |
| Checked by | Department of Energy, Mines and Resources, Surveys and Mapping Branch, Regina, Saskatchewan |

MUSCOWPETUNG I.R. No.80 SHEET 2 OF 12