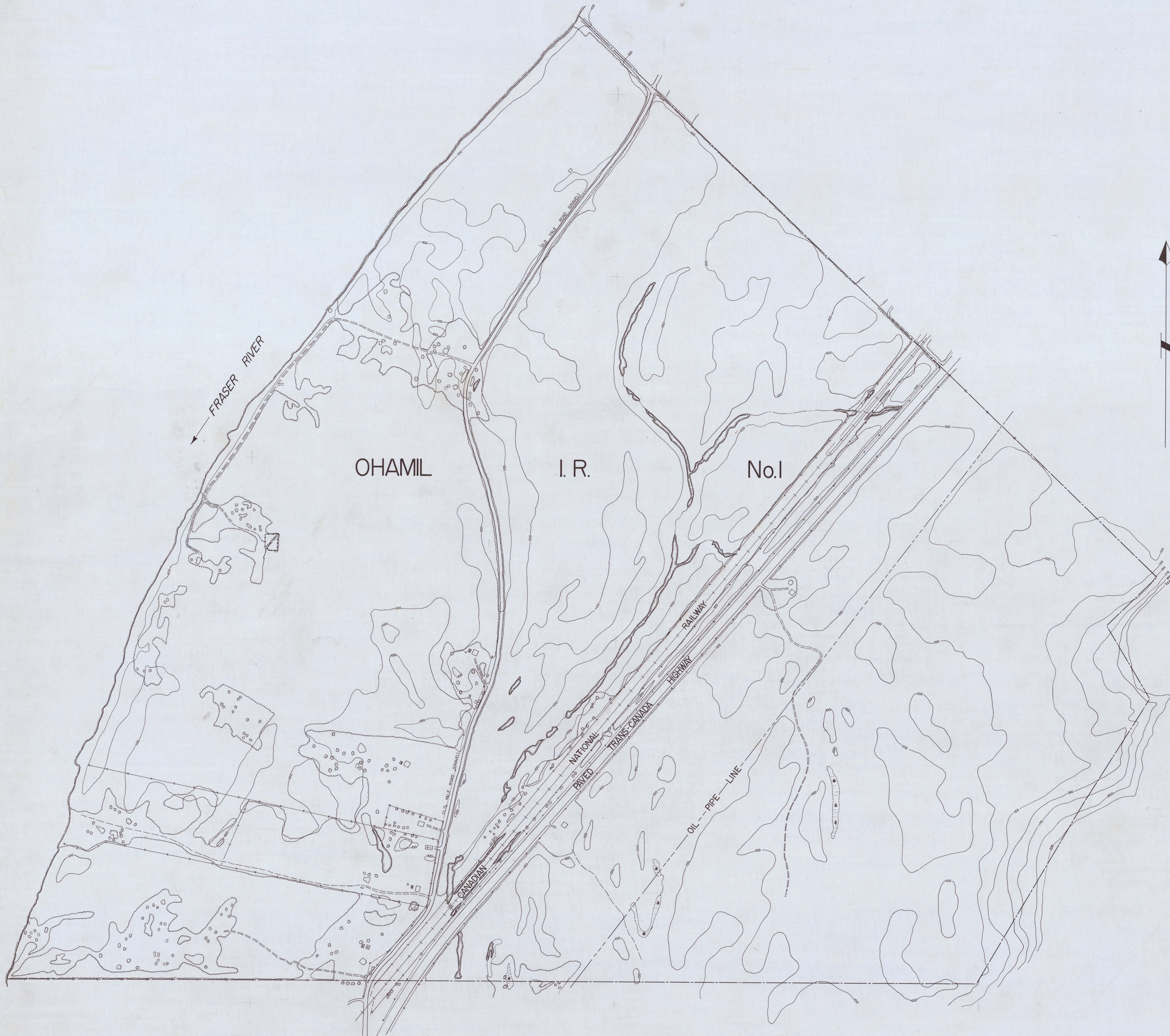


CANADA LANDS SURVEY RECORDS  
50465  
20 FEB. 1961



CANADA LANDS SURVEY RECORDS  
50465  
20 FEB. 1961

TOPOGRAPHICAL MAP OF  
OHAMIL INDIAN RESERVE No. 1  
NEW WESTMINSTER INDIAN AGENCY  
BRITISH COLUMBIA  
SCALE - 1 INCH = 200 FEET

LEGEND OF TOPOGRAPHICAL SYMBOLS

BOUNDARY OF INDIAN RESERVE  
CULVERT  
BUILDINGS  
BUSHLINE  
CONTOUR  
OIL PIPE LINE  
FENCES  
POWER LINE and POLES  
STREAM  
TRAIL  
WATERLINE

COMPILATION HISTORY

AIR PHOTOGRAPHY  
DATE - JUNE 22, 1960  
ALTITUDE - 5,830 feet  
CAMERA - Focal length 52.30mm.  
PHOTOGRAPHS - AIT084 - 27 to 31

GROUND CONTROL  
DATE - AUGUST 25, 1960  
HORIZONTAL - Transit and Chain Traverse

PLOTTING  
MANUSCRIPT by WLD AT, scale 1" = 200'

CANADA LANDS SURVEY RECORDS  
50465  
20 FEB. 1961