

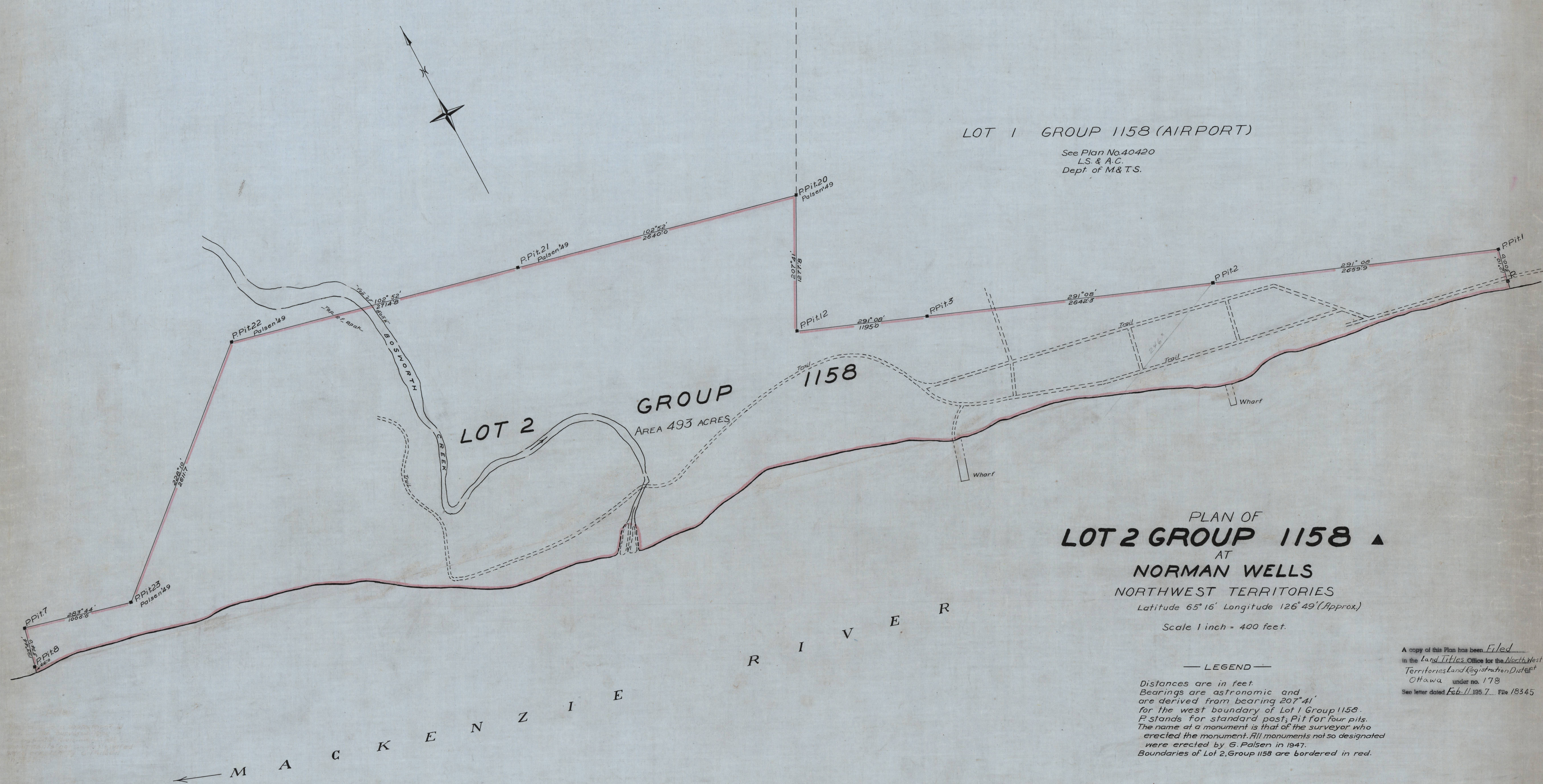
41215

CLIVAY
Land Titles and Technical Surveys
Department of Mines and Technical Surveys

41215

LOT 1 GROUP 1158 (AIRPORT)

See Plan No. 40420
L.S. & A.C.
Dept. of M. & T.S.



LOT 2

GROUP
AREA 493 ACRES

1158

PLAN OF
LOT 2 GROUP 1158 ▲

AT
NORMAN WELLS

NORTHWEST TERRITORIES

Latitude 65° 16' Longitude 126° 49' (Approx.)

Scale 1 inch = 400 feet.

— LEGEND —

Distances are in feet.
Bearings are astronomic and
are derived from bearing 207° 41'
for the west boundary of Lot 1 Group 1158.
P stands for standard post; Pit for four pits.
The name at a monument is that of the surveyor who
erected the monument. All monuments not so designated
were erected by G. Palsen in 1947.
Boundaries of Lot 2, Group 1158 are bordered in red.

A copy of this Plan has been Filed
in the Land Titles Office for the Northwest
Territories Land Registration District
Ottawa under no. 178
See letter dated Feb. 11, 1957. File 18345

Compiled from official surveys by
G. Palsen D.L.S. Aug 5th 1947.
G. Palsen D.L.S. June 15th 1949.

Department of Mines and Technical Surveys
Ottawa, 28th March, 1952.

Approved

W. L. L. L.
Surveyor General

Drawn by A.J.W.
Checked by S.K. 19/52

41215

CLIVAY
Land Titles and Technical Surveys
Department of Mines and Technical Surveys

41215